

2016

2016 ANNUAL REPORT



LETTER FROM THE CHAIR AND EXECUTIVE DIRECTOR

WHEN YOU CARE, OUR CHILDREN FLOURISH

SOS Children's Village's Florida has been serving foster children since 1993 with the focus on keeping sibling groups together. We have served close to 600 children since opening our doors.

Village life was good in 2016 as we were surrounded by individuals with incredible levels of dedication and commitment to help carry through our mission which is **"To provide a family-oriented community offering healing, hope, and home for children, young adults, and families to become self-sufficient, contributing members of society"**. We have the privilege of working with a strong Board and highly committed donors and volunteers, who each uphold our mission to the highest levels.

The past year brought about many positive changes for SOS as we strategically looked towards our future and that of the children we serve. We doubled the number of Board members who represent an excellent cross section of business and community leaders within South Florida. We optimized space and staffing resources at the Village to help create an overall more efficient operation. This was accomplished by moving our administrative offices from an offsite location to the Village which provided cost savings. We also underwent some staff restructuring which resulted in more efficient use of existing skills and allowed us to apply resources to areas slated for growth.



In December 2016, we decided to expand our Next Steps program. Next Steps is a life skills program designed to support the needs of children who exit foster care once they turn 18 years old. Through a grant from the Jim Moran Foundation, we will begin welcoming our first group outside of our children who will have support with securing housing, job placement, education, and a variety of other life skills.

Maintaining a high level of service for our children, and producing outcomes such as a 100% high school graduation rate, while the national level for children in foster care hovers below 50%, is something which brings us a great amount of pride. As you look through our annual report, please see our year in numbers and how your generosity and support allows our children lives to flourish.

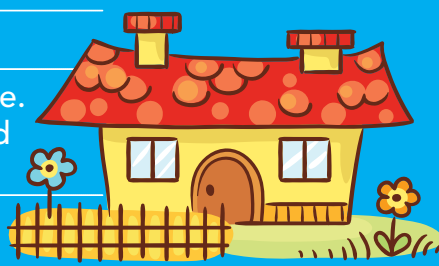
We thank each of you who have continued to provide the necessary resources to make a difference in the lives of those most vulnerable members of our society who need to know that the world is a kind place filled with people who care.

*Kristina Stein*  
Kristina Stein  
Board Chair

*Jillian Smath*  
Jillian Smath, MSW  
Executive Director

THE YEAR AS TOLD BY THE NUMBERS

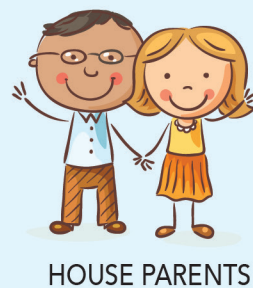
- 21 groups of siblings were served
- 157 children and young adults were served...
  - 85 children in the Village
  - 72 Next Steps Program Alumni
- 22 month average length of stay
- 24 reunifications with parents or family members
- 5 aged out of foster care at 18 years
- 6 graduated from high School
- 5 Next Steps SOS alumni graduated from college
- 2 adoptions
- 6 left SOS due to requiring a higher level of care
- 9 homes were renovated with 4 left to go
- 58 volunteer groups hosted projects at the Village. This does not include the hundreds who helped at our year-round special events.



COST OF RAISING A CHILD AT SOS

\$21,888 / YEAR  
The state of Florida provides 52% of our costs

\$10,506 / YEAR  
SOS must raise the remaining 48%



YOUR GIFTS



HELP PROVIDE



OTHER



HOME & UTILITIES



FOOD



CLOTHING



RECREATION



TUTORING

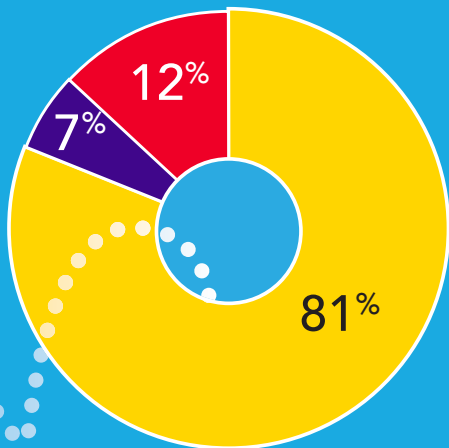


TRANSPORTATION

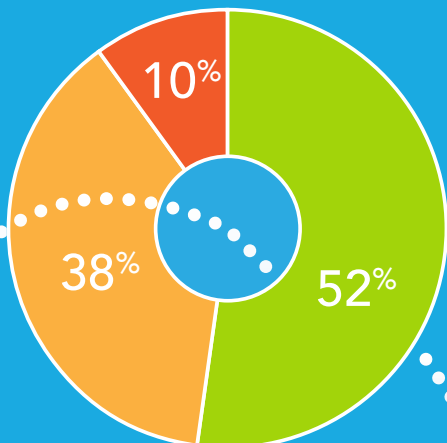


# HOW WE USE OUR FUNDS

Your support gives SOS Florida the means to provide every child with a warm home, caring family, happy childhood and an array of on-site programs and services 24 hours a day.



- Care & Services for Kids
- Fundraising & Outreach
- Village Management



- Government Contracts
- Contributions
- Event Proceeds

## HOW WE ARE FUNDED

In addition to the daily stipend SOS Florida receives from the state for the daily care of our kids, we rely greatly upon the support of friends like you to meet the needs of our families.

## 2016 ANNUAL REPORT Audit



TOTAL REVENUES:		\$3,684,880
Grants		\$502,958
Child Net /Government grants		\$1,982,612
Special Events		\$429,893
Other Income		\$769,417
EXPENSES		
Program Services		\$2,990,494
Management And General		\$257,122
Fundraising		\$507,536
Special Events		\$205,506
COMBINED FINANCIAL STATEMENT		
Breakdown Of Assets (cash and cash equivalent)		\$61,196
Property And Equipment Net		\$1,344,230
Other Assets		\$331,870
Liabilities		\$918,793
NET ASSETS		\$818,503
Temporarily Restricted And Unrestricted		\$0
Permanently Restricted		\$0
TOTAL NET ASSETS		\$818,503



## A STORY OF HOPE



In the fall, we welcomed a group of six siblings ages 1 to 8 years old. These brothers and sisters were removed from their home due to neglect, inadequate supervision, and substance abuse by their mother. When the children were taken from the care of their mother and father, they were separated in three different counties until they were all reunified here at SOS Children's Villages Florida. It is difficult in foster care to keep larger groups of siblings together – this is one of our primary areas of focus here at SOS. They arrived broken, afraid, and with few belongings. The older children were performing below grade level. Once at SOS, they began attending the area elementary school and a local daycare. They received tutoring in math and reading to bring them to grade levels. Their house parent showered them with love and kindness, showed them patience and understanding, and created hope and happiness where there was none.

Mom continues to use drugs and has untreated mental health issues. Dad has disappeared. The courts determined that the goal for this sibling group will be adoption. In the meantime, your support has provided healing, hope, and home for these precious lives.



### BOARD OF DIRECTORS

Kristina Stein <i>Board Chair</i>	Jason Bishara Crystal & Company
Nick Catania <i>SOS-USA Rep</i> UBS Financial Services, Inc.	Steve Bonner Seminole Casino Coconut Creek
Connie Finley <i>Secretary/Governance Committee Chair</i>	Simeon D. Brier Cozen O'Connor
William Kramer <i>Board Chair - Elect</i> Brinkley Morgan	Matthew Geller DTRT Insurance Group, Inc.
Patricia Pierce <i>Treasurer/Finance Committee Chair</i> American Express	Michael Greenfield DLA Piper LLP
Rocki Rockingham <i>Fund Development Committee Chair</i> Newell Brands	Elizabeth Guimaraes Nova Southeastern University, Inc.
Marc Bell Marc Bell Capital Partners	Marcy Falcone The Falcone Group
	Wayne Griner John Wayne Construction

Connie Doyle Loewenthal iHeartMedia
Famous Rhodes AutoNation
Jackson Self Charter Schools USA
Sandy Smith Daszkal Bolton LLP
Mark Thompson NextEra Energy Resources
Vicki Weinstein Attorney
Owen Wild NCR Corporation
Greg Zeigler JM Lexus

### EXECUTIVE STAFF

Jillian Smath, MSW <i>Executive Director</i> jsmath@sosflorida.com
Dawn Seay <i>Vice President of Development</i> dseay@sosflorida.com
Sandra Wallace <i>Program Director</i> swallace@sosflorida.com
Corissa Griffin <i>Director of Human Resources</i> cgriffin@sosflorida.com

A special thank you to our partners:

